



# COMPANY PROFILE

## CONTENTS:

- COMPANY DATA
- STRUCTURE
- PRODUCTS & SERVICES
- STRUCTURE
- CAPACITY
- FACILITIES
- QUALITY CONTROL
- FINANCES
- WORK TO DATE

# COMPANY DATA

SP2000 ROADS (PTY) LTD  
PO Box 1610  
Boksburg  
1460  
Email : herman@sp2000.co.za

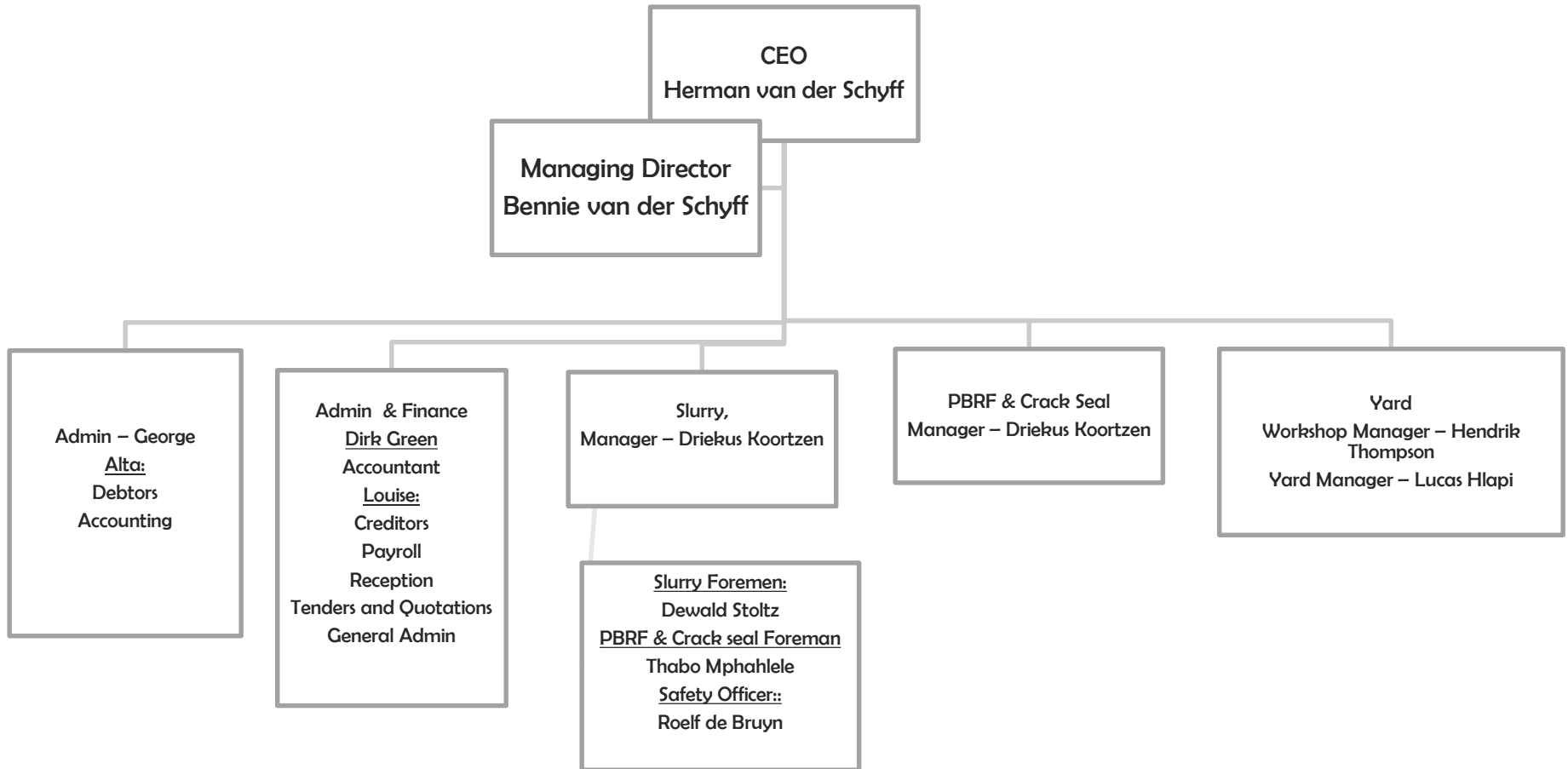
George Office  
48 Albert Street  
George  
6529

Tel : 044 873 2892  
Fax : 044 894 1601

Petit Yard  
Plot 141 Pretoria road  
Petit, Benoni  
1501

Tel : 011 965 1346  
Fax : 011 965 0167

# ORGANISATION STRUCTURE



# PRODUCTS & SERVICES

## Services

- Slurry Seal teams servicing the entire country & neighboring countries. Each team is totally self sufficient and includes foremen with years of experience
- PBRF teams (*Polymerised Bitumen Rejuvenator with mastic Filler*) servicing the entire country & neighboring countries. These teams are totally self sufficient and includes foremen with years of experience
- Crack Sealing team can work independently or in conjunction with our Slurry- & PBRF teams
- Weed killing

## In-house services

- Our entire fleet of vehicles and plant are serviced and maintained by our team of qualified mechanics.
- Our Slurry Machines are build in-house by our skilled boilermakers.
- The newest addition to our fleet is the in-house build crack seal unit.

## Products

- Slurry Seal is applied under strict quality control and according to COLTO specifications while conforming to the requirements of our client.
- PBRF (Polymerised Bitumen Rejuvenator with mastic Filler) is a propriety product that is mixed & applied under license.
- Manufacturing of SPC Asphalt in 30kg bags. The cold tar is manufactured at our yard in Petit following the strictest quality standards being adhered to.
- Bituflex crack sealer in 20/25ℓ drums

# CAPACITY

## Teams:

2 x Slurry Seal teams

2 x PBRF teams (with the capacity to expand)

2 x Crack Seal Teams

1 x Weed Killer team



## Yard:

1 x Plant producing  $\pm$  20 tons of SPC Asphalt in 30kg bags per day  
(with a second plant on stand-by should the need arise)

Maintenance teams on 24 hour stand-by

Secure storage facility for all our plant & equipment



# FACILITIES

## Benoni

Land owned by SP2000 Roads

- **Buildings :**  
Offices to accommodate all our managers & admin personnel  
Fully equipped workshop  
Accommodation & Ablution facilities
- **Facilities :**  
SPC Plant  
Fuel depot  
Parking Facilities for all our plant & equipment

## SP2000 Roads

- **Logistics:**  
Our Fleet of tankers haul Bitumen, Emulsion & PBRF required on site.  
Our Fleet of low-bed and other trailers ensure smooth and timely transitions between the various sites of operation  
The company has an extensive network of suppliers and vendors across the country to facilitate smooth running of all operations  
Constant communication between the various sites and the administration offices make for seamless operations

## George

Office in town owned by SP2000 Roads

- **Buildings :**  
Office with reception area, boardroom and offices  
Parking area  
Garages

# STANDARDS & QUALITY CONTROL

- Collaborations & Joint Ventures
- Access to test and standard institutes
- Relationship with suppliers

# FINANCES

- **CONTACT BOOK KEEPER :**  
**GLOBAL ACCOUNTING - DIRK GREEN**